

Test Case-39

Test Name: RJIL-IP-QA-DS-SYS-040

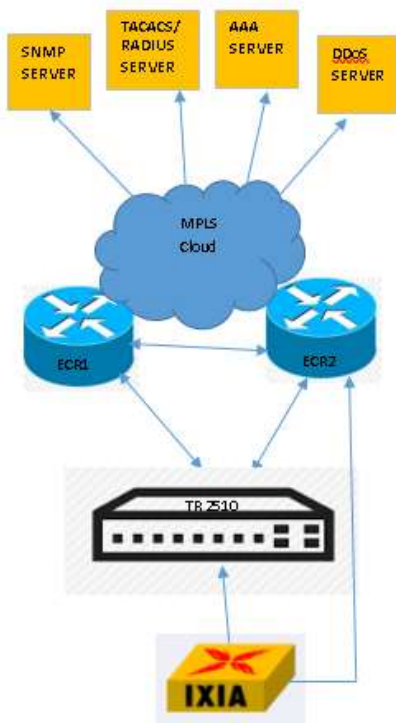
Test Objective: To check support for password encryption.

Test Configuration:

Service password-encryption

!

Test Set up (Including Pre requisites): Switch , ECR1,ECR2



Procedure: Connect Switch to the ECR1, ECR2

Action:

Response:

| | | | |
|---|-----------------------------|----------|---|
| 1 | Service password encryption | 1 | Switch should support password encryption |
| Expected Result: Switch should support password encryption | | | |
| | | | |
| Actual Result: Current configuration: ! username admin password 7 052F304A403F GUICHECK#GUICHECK_config#show ver GUICHECK_config | | | |